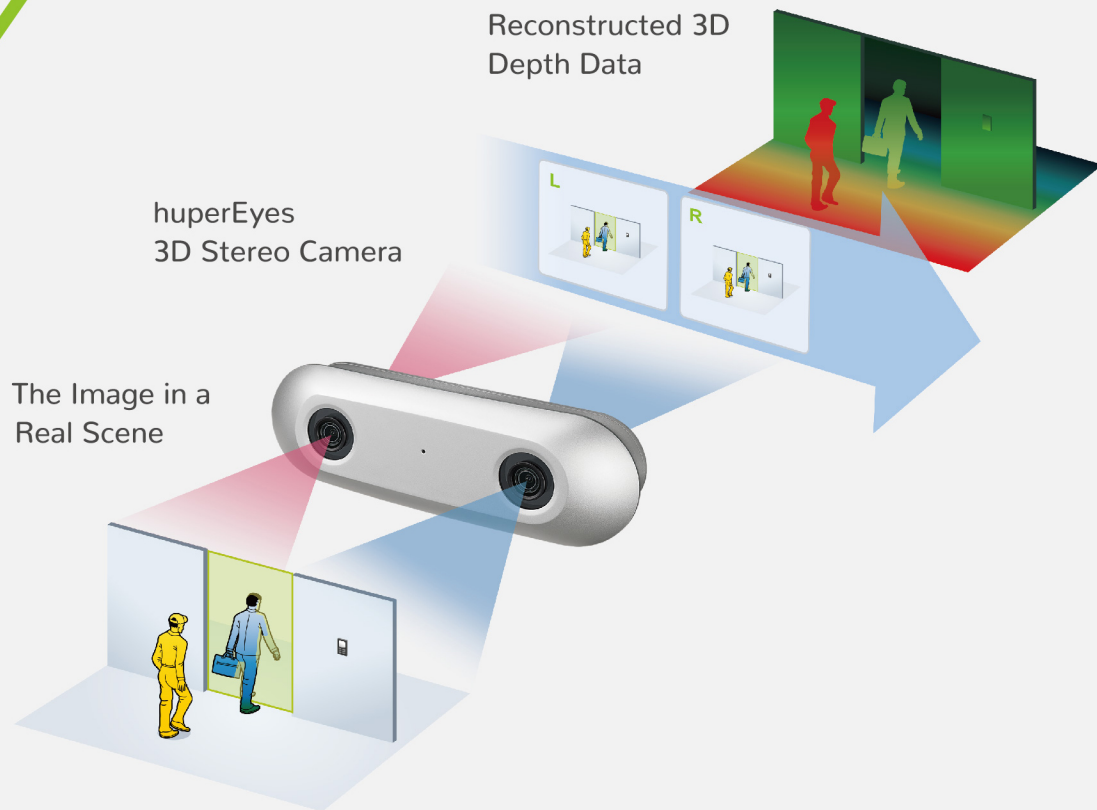


huperEyes 3D

Real Tracking Sensor by 3D Intelligent Stereo Vision



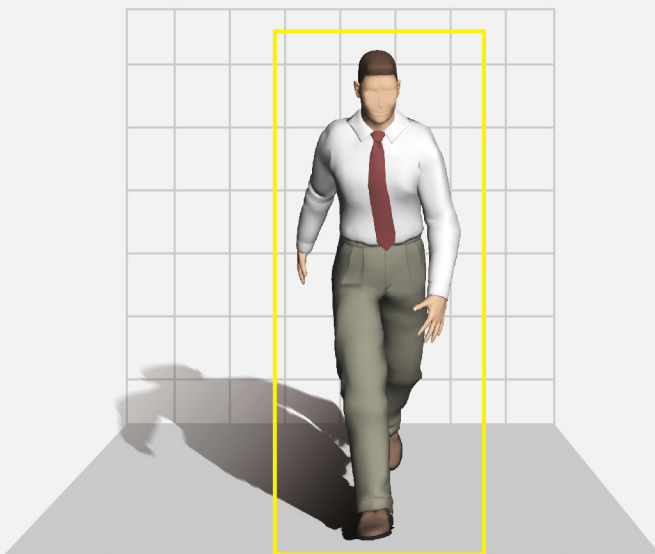
huperEyes 3D Stereo Camera is utilizing dual-lens camera based on 3D stereo vision technology to capture and construct moving object image in depth. The stereoscopic technology, with height filter method, can better distinguish the moving objects from the background and deliver a high tolerance to critical weather conditions and dynamic indoor/outdoor environments with high accuracy.

huperEyes 3D Video Analytics

Key Features

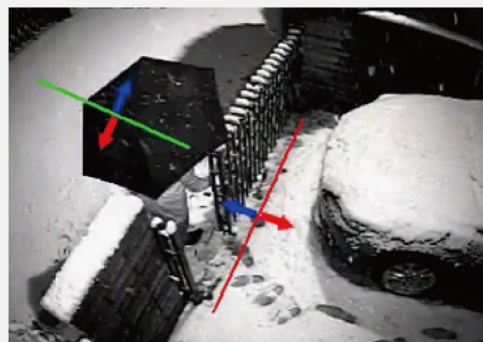
■ Up to 98%+ High Accuracy in 3D Stereo Vision

- Bi-directional detect 3D moving objects in depth
- Better distinguish the moving objects from the background in density area
- Able to handle U-turns and designate flow directions



■ High Tolerance to Critical Weather Conditions*

- Reduce false alarms in rainy, snowy and windy days



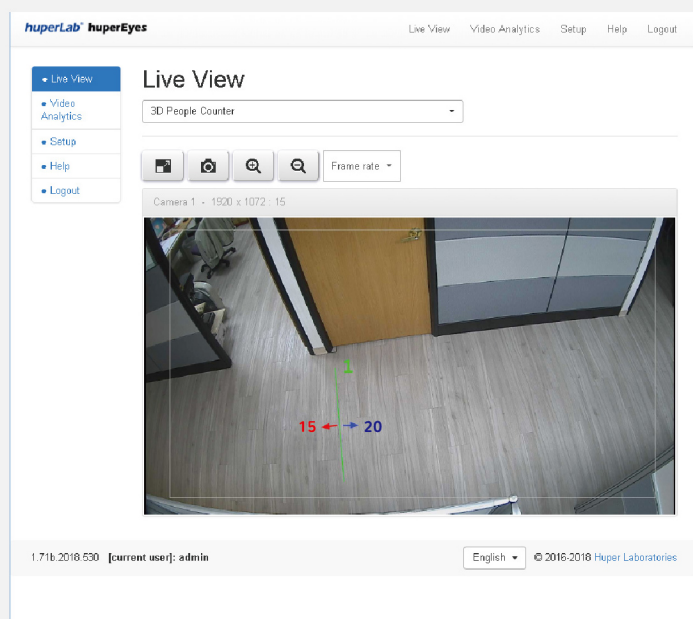
■ Ideal for Dynamic Indoor Indoor/Outdoor Environment Use*

- Free from affecting by sunlight and shadow changes, car lights, auto doors, bouncing balls, swaying reflections and surroundings
- Water-proof camera body and accessories, anti-collision steel chassis, and anti-flare lens design
- Ideal to use at daytime and nighttime

*Note:It requires extra IR LED projectors at night

Ease of Installation and Maintenance

- Quick operation with web setting on smart phones and tablets
- Self-own 3D stereo depth perception technology to fulfill sophisticated applications
- Save service costs



Better Operation & Configuration

- RTSP video stream support for NVR to record video data
- Support polygonal counting detection lines to fulfill different entrance/surrounding cases

Coverage Distance Expansion

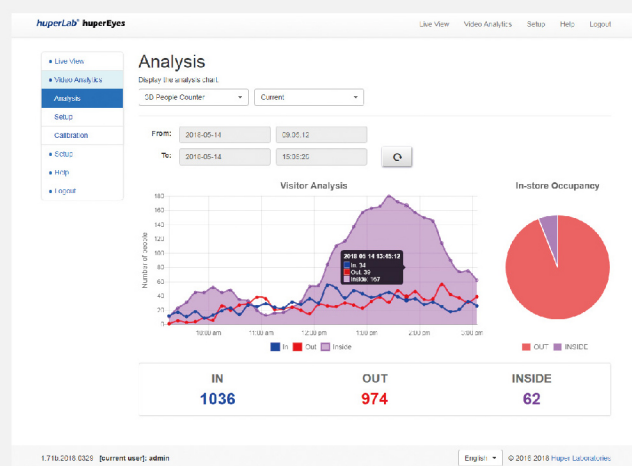
- With the different sensor model and server system of the product portfolio, it covers up to 10 m coverage distance at the installation heights from 2.1 m to 10 m.

Real-time Alerts and Alarm Warning on Mobile Devices

- Instant push event notification to iOS/Android smart phones and tablets
- Play alarm sound by smart cam APP
- Two-way voice communication

Analysis Data Retrieval and Business Reporting

- hyperReporter allows to generate detection analysis reports by date, time and height filtering, and display analysis data from multiple smart cameras
- Web-based chart display for video analytics data analysis



3D Video Analytics Features Available

Retail & Access Control

- 3D People Counter
- 3D Tailgating Detection
- 3D Area Counter
- 3D Loitering Detection

Factory & Manufactory

- 3D Virtual Fence
- 3D Fall Detection
- 3D Stop Detection
- 3D Secure Zone

Transportation

- 3D Vehicle Counter

System Integration

■ SDK Available for Integration

- C++/OCX SDK for application systems on Windows
- CGI Commands for application systems on all OS platforms
- Compliant RTSP video/audio streams
- Supported functions: video analytics database retrieving, analysis chart web customization, video/audio streams of live video and video recordings, event notifications, and system settings

Hardware Specifications

All-in-one 3D Stereo Camera



3D Stereo Camera for Wide Area



huperEyes 3D Smart

Product Model	HE-S800
Max. Mounting Height	5 m*
Max. Depth Distance	Up to 5 m*
Installation Angle	45-90 degrees*
Image Sensor	1/3" Sony CCD
Pixel	~410K
Resolution	520TVL
Memory	DDR3L 2GB (on board)
CPU	Intel® Atom™ Processor
Storage	eMMC 32GB (on board)
LAN	Gigabit LAN x 1
Two-way Voice	Built-in MIC/Speaker
Operation System	Win 10 IoT Enterprise Entry
External I/O	Micro-HDMI slot x 1 Micro USB 2.0 x 1/USB 2.0 x 1 Audio combo Jack x 1 Micro-SDXC card Slot x 1 (support up to 2TB) Cables for LAN Port and GPIO
Operating Temperature	0° - 45° C
Storage Temperature	-20°C ~ +70° C
Operating Humidity	10%-90% (relative, non-condensing)
Dimension	230(W) x 75(H) x 70(L) mm
Weight	1000g
Power Input	DC12V 3A DC-in

huperEyes 3D Stereo Camera

Product Model	HE-A504	HE-A505
Mounting Height	2.1 m - 10 m*	
Detection Distance	Up to 10 m*	
Installation Angle	45-90 degrees*	
Image Sensor	1/3" Sony CCD	
Video Output	1.0Vp-p 75Ω Composite	
Pixel	~410K	~510K
Resolution	520TVL	700TVL
Minimum Illumination	0.08Lux/F1.2/IR ON 0Lux	
Two-way Voice	Built-in MIC/Speaker	
S/N Ratio	>52db (AGC off)	
Gamma Correction	0.45	
Electronic Shutter	Auto (1/50(60) - 1/100,000sec)	
White Balance	ATW, 3200° - 10000°K	
Operating Temperature	-20° ~ +50°C	
Operating Humidity	RH85%	
LED	8 sets (IR 850 nm)	
Dimension	230(W) x 75(H) x 50(L) mm	
Weight	700g	
Power Input	DC12V, 10W/1.5A	

Note

- 1 *The numbers will vary based on the camera models and applications.
- 2 huperEyes 3D Smart supports Wi-Fi/3G/4G connectivity with an additional plug-in-connect USB dongle.
- 3 Product specifications and product pictures are subject to change without prior notice.